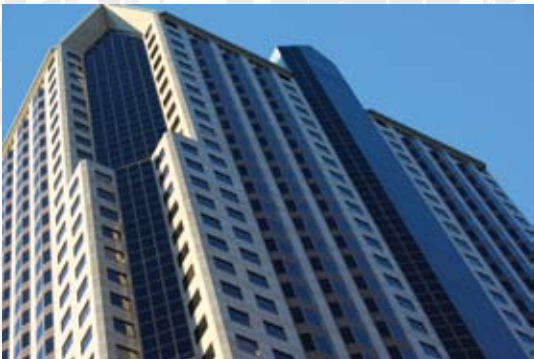


Metropolitan Square

- Lease Rates from \$20-\$22/s.f.
- 42-story Landmark Trophy Building
- Small Suites and Full Floors Available Immediately
- In-Building Covered Parking
- 24/7 on-site Building Security
- On-Site Property Management/Maintenance
- Spectacular Views of Downtown
- Easy Access to Interstate I-64, I-44, I-70 & I-55

Property Overview



For leasing information call

Henry Voges 314.261.7372
henry.voges@am.jll.com

Carrie J. Herrmann 314.261.7367
carrie.herrmann@am.jll.com

 JONES LANG
LASALLE
Real value in a changing world